

PV Inverters ▾	Floating System ▾	Storage System ▾	PV Power Plant ▾	Products ▾	Service & Support ▾
Solutions Products References	Solutions Products References	Solutions Products References	Solutions Products References	Overview Central Inverter String Inverter PV Power Plant modules (?) Floating modules (?) Storage System Accessories Knowledge Base	Service Contact Us

PV Inverter (Overview Page)	Floating System (Overview Page)	Storage System (Overview Page)	PV Power Plant (Overview Page)
--------------------------------	------------------------------------	-----------------------------------	-----------------------------------

Event & Explore	Events & Explore (此版块用现在英文网站的风格)	Press Center (此版块用现在英文网站的风格)
Event Expo/Conference Webinar Roadshow		
Explore Video Whitepaper		

Sungrow		
About Sungrow	Missions	History

SUNGROW	About Sungrow Mission History R&D Social Responsibility IR (隐藏)	Download Center About Sungrow Knowledge Base	Careers Career Job Research	Contact Us
----------------	--	--	-----------------------------------	------------



Homepage / PV Inverters

PV Inverter is one of the two major components of PV power plants, the main function of PV Inverter is to track the maximum power output of PV array, and connect energy to the grid with minimum energy consumption and maximum power quality..Since the inverter is connected in series between the PV arrays and the grid, the choice of inverter will be critical to ensure the long-term reliable operation of PV power plant and expected ROI, thus, it should be "scientifically designed according to local conditions" .We advocate the intelligent PV power plant design concept of "safer, more friendly, more intelligent, more efficient" , according to different environmental conditions of installation.

Solutions



Utility PV Solution



Commercial PV Solution

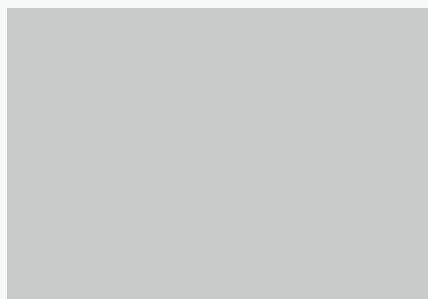


Residential PV Solution



Monitoring System

Products



SG3125HV-MV



SG3125HV



SG125HV



SG50KTL-M

References



205 MW Fresno, California, USA



205 MW Fresno, California, USA



205 MW Fresno, California, USA



205 MW Fresno, California, USA



PV power plant is generally divided into four different types :



Utility PV Solution



Commercial PV Solution



Residential PV Solution



Monitoring System



Low Investment



High yield



Complete Functions

Utility PV Solution



Features:

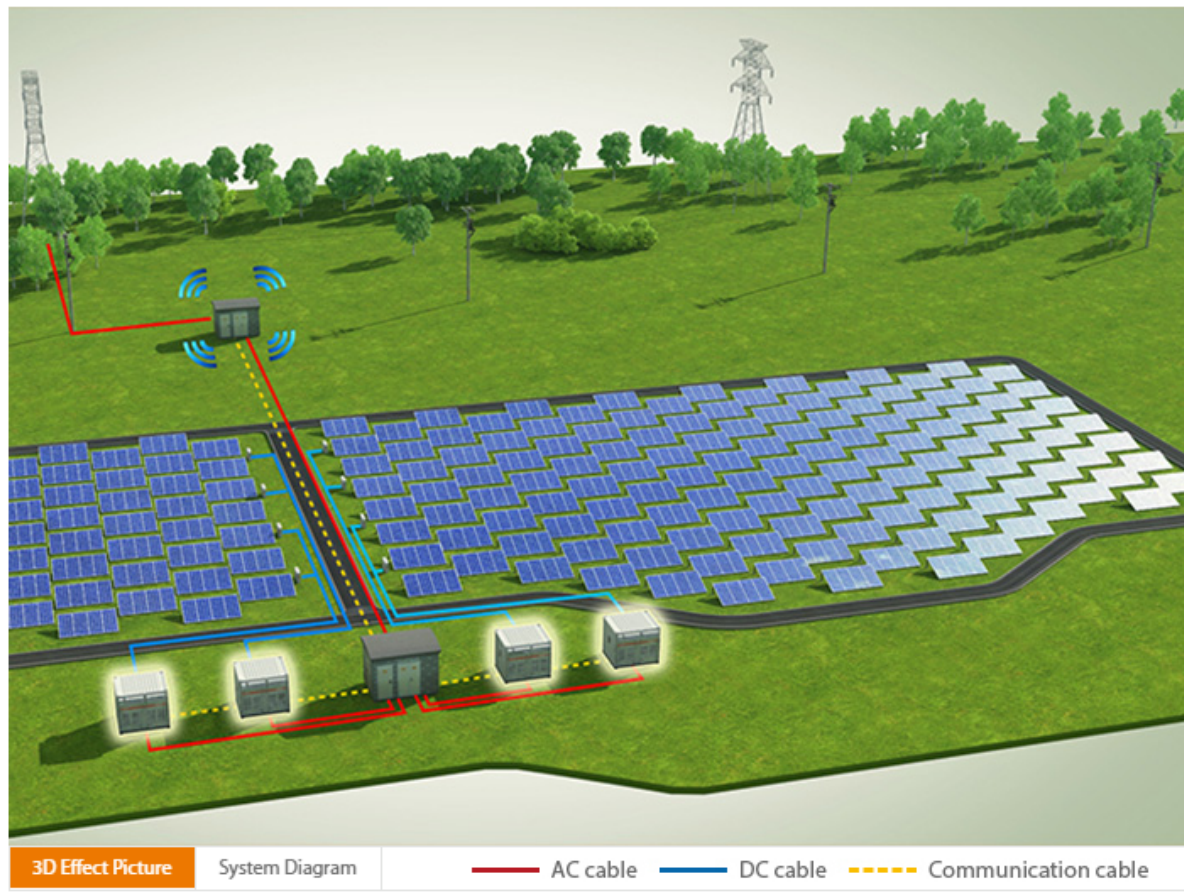
- Integrated container inverter, low investment for the system, versatile application possibilities
- Integrated programs, better meet the requirement of the grid, more adaptable to the grid
- Small number of devices, easy installation and maintenance, low operation and maintenance costs



Features:

- Integrated container inverter, low investment for the system, versatile application possibilities
- Integrated programs, better meet the requirement of the grid, more adaptable to the grid
- Small number of devices, easy installation and maintenance, low operation and maintenance costs
- Equipped with SVG function, fast response to the reactive power control, to satisfy the needs of dispatching
- Flat terrain with no shelter, number of MPPT has almost no impact on the power yield

System Structure Diagram:



Products



SG3K-S

自适应复杂电网，延长并网发电时间
支持1.1倍过载，高辐照时提升发电量10%
电能质量高，对用电设备无干扰
APP一键扫码接入监控平台，电站信息全掌控



SG4K-D

自适应复杂电网，延长并网发电时间
支持1.1倍过载，高辐照时提升发电量10%
电能质量高，对用电设备无干扰
APP一键扫码接入监控平台，电站信息全掌控



SG5K-D

最大效率98.4%，高于行业平均水平1%以上
电能质量高，对用电设备无干扰
易插拔端子设计，安装方便快捷
APP一键扫码接入监控平台，电站信息全掌控



SG6K-D

最大效率98.4%，高于行业平均水平1%以上
支持1.1倍过载，高辐照时提升发电量10%
超低辐射，符合家用设备标准要求
APP一键扫码接入监控平台，电站信息全掌控

References



安徽肥东长临河镇罗洪村户用屋顶光伏发电...



中国首个PPP光伏扶贫项目——安徽岳西光...



宁夏农村户用屋顶项目

SUNGROW

About Sungrow
Mission
History
R&D
Social Responsibility
IR (隐藏)

Download Center
About Sungrow
Knowledge Base

Careers
Career
Job Research

Contact Us



High Yield
Advanced three-level technology, max. efficiency up to 99%
Effective cooling, full power operation at 50 °C
Max. DC/AC ratio up to 1.5

Easy O&M
Integrated current and voltage monitoring function for online analysis and fast trouble shooting
Modular design, easy for maintenance
Convenient external LCD

Grid Support
Compliance with standards: CE, IEC 62109
Low/High voltage ride through (L/HVRT)
Active & reactive power control and power ramp rate control

Saved Investment
Low transportation and installation cost due to 10-foot container design
DC 1500 V system, low system cost
Integrated LV auxiliary power supply
Night Static Var Generator (SVG) function

此块板式请重新进行设计，这样排版不适宜。
四个卖点，按照中文模式展现，不好看，请看示意图：

数据展现之前讨论的结论：
字间距和断句 还有左边与右边的间距

Technical Data

Input (DC)

Max. PV input voltage	1500V
Min. PV input voltage / Startup input voltage	875 V / 900 V
MPP voltage range for nominal power	875 – 1300 V
No. of independent MPP inputs	1
No. of DC inputs	21
Max. PV input current	4178A
PV array configuration	Negative grounding

Output (AC)

AC output power at PF=1	3594 kVA@ 25°C / 3437 kVA@ 45°C / 3125 kVA@ 50°C
AC output power at PF=0.9	3235 kW@ 25°C / 3093 kW@ 45°C / 2813 kW@ 50°C
Max. AC output current	3458 A
Nominal AC voltage	600 V
AC voltage range	540 - 660 V
Nominal grid frequency / Grid frequency range	50 Hz / 45 – 55 Hz, 60 Hz / 55 – 65 Hz
THD	< 3 % (at nominal power)
DC current injection	< 0.5 % In
Power factor at nominal power / Adjustable power factor	> 0.99 / 0.8 leading – 0.8 lagging
Feed-in phases / Connection phases	3 / 3

Efficiency

Max. efficiency / Euro. efficiency	99.0 % / 98.7 %
------------------------------------	-----------------

Protections & Functions

DC input protection	Load switch + fuse
AC output protection	Circuit breaker
Overvoltage protection	DC Type I + II / AC Type II

文档下载



SG3125 PV-INV Datasheet
257.60 KB | PDF



SG1000MX-INT Installation Manual
3.24 MB | PDF



SG1000MX-Operation Manual
8.94 MB | PDF



SG1000MX-Operation Manual
765.92 KB | PDF

产品咨询

Online Information

Product Model: SG500MX

Company: 公司

* 地址: 地址

Name: 姓名

Tel : * 电话: 电话

* 邮箱: 邮箱

Message: 例如：关于SG500MX的使用问题

提交

电话咨询

这块联系信息 需要和所有大区同事对接 五一回来给你

总部

0551 - 6532 7878 0551 - 6532 7877

国内光伏销售:

0551 - 6532 7827 0551 - 6532 7828 0551 - 6532 7821 sales@sungrowpower.com (销售) pv-system@sungrowpower.com (工程技术)

SUNGROW

About Sungrow
Mission
History
R&D
Social Responsibility
IR (隐藏)

Download Center
About Sungrow
Knowledge Base

Careers
Career
Job Research

Contact Us



中节能石嘴山20MW光伏农业大棚并网电站
应用机型: SG 1000TS (下线)



宁夏同心县隆基二期40MW光伏电站
应用机型: SG500MX SG 1000TS-M (下线)



宁夏中宁县隆基天华20MW山地光伏电站
应用机型: SG 1000TS-M (下线)



晶科能源海宁袁花镇红新村6MW农光互补项目
应用机型: SG 1000TS (下线)



中华电力云南大理西村100MW农光互补示范...
应用机型: SG 1000TS (下线)



天合光能云南建水南庄300MW山地光伏电站
应用机型: SG 1000TS-M (下线)



中节能石嘴山20MW光伏农业大棚并网电站
应用机型: SG 1000TS (下线)



宁夏同心县隆基二期40MW光伏电站
应用机型: SG500MX SG 1000TS-M (下线)



宁夏中宁县隆基天华20MW山地光伏电站
应用机型: SG 1000TS-M (下线)



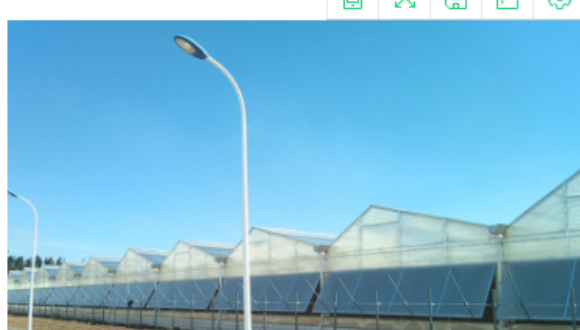
晶科能源海宁袁花镇红新村6MW农光互补项目
应用机型: SG 1000TS (下线)



中华电力云南大理西村100MW农光互补示范...
应用机型: SG 1000TS (下线)



天合光能云南建水南庄300MW山地光伏电站
应用机型: SG 1000TS-M (下线)



中节能石嘴山20MW光伏农业大棚并网电站
应用机型: SG 1000TS (下线)



宁夏同心县隆基二期40MW光伏电站
应用机型: SG500MX SG 1000TS-M (下线)



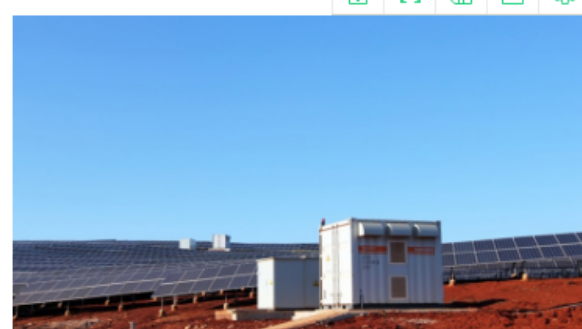
宁夏中宁县隆基天华20MW山地光伏电站
应用机型: SG 1000TS-M (下线)



晶科能源海宁袁花镇红新村6MW农光互补项目
应用机型: SG 1000TS (下线)



中华电力云南大理西村100MW农光互补示范...
应用机型: SG 1000TS (下线)



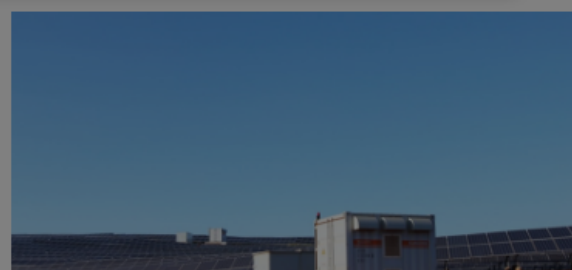
天合光能云南建水南庄300MW山地光伏电站
应用机型: SG 1000TS-M (下线)



宁夏同心县隆基二期40MW光伏电站

时间: 2015年1月
案例地点: 宁夏同心县
装机容量: 40MW
应用机型: **SG500MX, SG 1000TS-M (下线)**
项目介绍: 大型荒漠电站, 采用箱式逆变房和土建房两种方案, 荒漠风沙环境下有效防护、平稳运行, 地形平坦、光照充足、发电量稳定高效。

中节能
应用机



Time: 2015
Project: Newnham, UK
Installed capacity: 11.5MW PV plant
Product Model: SG3125HV
Introduction: Effective cooling, full power operation at 50 °C; Modular design, easy for maintenance

标题与信息需要设计上需要设计分开;
字形, 字size, 颜色

Products (attached icons)

Overview (Map)

SELECT YOUR LOCATION



Center Inverter	String Inverter	PV Power Plant modules (?)	Floating modules (?)
SG2500HV-MV/SG3000HV-MV	SG125HV	1	SG125HV
SG2500U-MV	SG111HV	2	SG111HV
SG3125HV	SG80KTL	3	SG80KTL
SG2500HV/SG3000HV	SG60KTL		SG60KTL
SG2500U	SG50KTL-M-20		SG50KTL-M-20
SG1250HV/SG1500HV	SG30KTL-M/SG36KTL-M		SG30KTL-M/SG36KTL-M
SG2000-MV/SG2500-MV	SG60KU-M		SG60KU-M
SG2000/SG2500	SG49K5J		SG49K5J
SG1000/SG1250	SG33K3J		SG33K3J
SG1000MX(?)	SG10KTL-M/SG12KTL-M		SG10KTL-M/SG12KTL-M
SG500MX/SG630MX	SG3KTL-D/SG5KTL-D		SG3KTL-D/SG5KTL-D
	SG2K-S/SG2K5-S/SG3K-S		SG2K-S/SG2K5-S/SG3K-S
	SG3K-D/SG5K-D		SG3K-D/SG5K-D
Storage System	Accessories		
SC50	STB5K(?)		
SC100	STB5K-20(?)		
SC250	SolarInfo Wi-Fi		
SC500TL	SolarInfo Moni		
SC1000TL	SUNBOX PVS-24M-HV		
SC1000HV	SUNBOX PVS-16M-DB		
SC250KU	Solarinfo Logger		
SC500KU	Solarinfo Home		
SC1000KU	iSolarCloud		
SD200-B(?)	ZE100(?)		
Medium/Energy(?)	ESHOW(?)		



About Sungrow
 Mission
 History
 R&D
 Social Responsibility
 IR (隐藏)

Download Center
 About Sungrow
 Knowledge Base

Careers
 Career
 Job Research

Contact Us